

IV ADMINISTRATION USING A BREAK & SHAKE BAG AND A FLOW RATE CONTROLLER

See instructional video by clicking link below.

<https://www.landmarkinfusion.com/flow-controlled-administration-video>

GETTING STARTED

- Use a clean work area.
- Clean your hands thoroughly.

GATHER YOUR SUPPLIES

- IV Medication bag
- IV tubing with Flow-Rate Controller
- IV pole
- Flush syringes: Saline (white cap), Heparin (yellow or blue cap)
- Orange swab cap
- Alcohol Wipes
- Trash container
- SASH mat guide

INSPECT MEDICATION BAG

- Check label on medication bag.
- Verify correct name of patient, correct name of medication
- Review discard date of medication.
- Medication bag should be free of leaks or discoloration. Call the pharmacy for problems with medication bag or incorrect labels.

PREPARE YOUR IV MEDICATION

- Fold and roll the saline bag towards the vial until the seal opens (you will hear a small pop) and saline flows into the medication vial.
- Squeeze the bag to force fluid into vial.
- Gently shake the vial until the drug is completely dissolved.
- Hold the medication bag upside down and release squeeze to drain the mixed drug from the vial back into the bag.
- You may repeat these steps until the vial is completely empty of the drug and solution (DO NOT remove the drug vial).

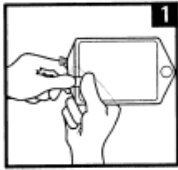
Irving: 8200 Tristar Drive, Suite 120
Irving, Texas 75063

Fort Worth: 3515 NW Jim Wright Freeway
Fort Worth, Texas 76106

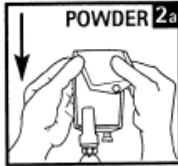
Pharmacy Phone: (866) 388-3883
Pharmacy Fax: (888) 249-3132

www.landmarkinfusion.com

Activation and Administration Set Instructions



1 At time of use, check to ensure addEASE is firmly latched to container. If not firmly latched, discard assembly. Prior to reconstitution, inspect contents of drug vial for presence of liquid. If liquid is present in powdered drug, discard assembly.

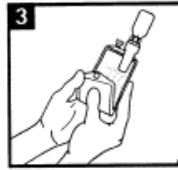


POWDER 2a

To activate vial containing *powder drug*, position vial below container **2a**. For vial containing *liquid drug*, position vial above container to activate **2b**. Fold container a third from top and squeeze firmly to force plug from spike into vial. To transfer diluent to vial, fold container a third from top and squeeze firmly. Repeat until vial is approximately half full. Do not overfill vial with liquid. Thoroughly mix to reconstitute, following drug manufacturer's Package Insert.



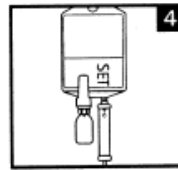
2b LIQUID



With vial positioned above container, as shown, fold container a third from top and squeeze firmly to transfer solution from vial to container. If necessary, repeat Steps 2 and 3.

CAUTION: Inspect solution and discard assembled system if cloudiness, haze, or particulate matter is found.

Consult medication vial Instructions for Use for additional admixing instructions.



4 After reconstitution, attach the administration set to container set port. Refer to IV set Instructions for Use. Hang container. To prevent fluid from re-entering vial, avoid squeezing or flexing container.

CAUTION: Do not disconnect medication vial or PAB container from addEASE. After use, dispose of assembled system per institutional protocol.

PRIME YOUR IV TUBING

- Remove IV tubing from its package. Close the clamp on the tubing.
- Place the medication bag on a clean flat surface.
- Remove the tab from the medication bag.
- Remove the cover from the spike of the tubing (DO NOT touch the end).
- Spike the bag by pushing and twisting the end of the tubing into the bag. Make sure the spike reaches the medication in the bag and be careful not to puncture the bag.
- Hang the IV medication bag on the IV pole. Gently squeeze the drip chamber to fill it about ½ full of fluid (DO NOT overfill).
- Turn the IV tubing dial to "OPEN" Open the clamp to prime the tubing (filling the tubing with medication). When the medication reaches the end of the tubing, close the clamp.
- Adjust the tubing dial to set the correct rate for your IV infusion (your rate will be on medication label).



Irving: 8200 Tristar Drive, Suite 120
Irving, Texas 75063

Fort Worth: 3515 NW Jim Wright Freeway
Fort Worth, Texas 76106

Pharmacy Phone: (866) 388-3883
Pharmacy Fax: (888) 249-3132

www.landmarkinfusion.com

INFUSE MEDICATION VIA SASH PROCEDURE AS DETAILED BELOW:**1. Flush your IV line with saline (S)**

- If applicable, release the clamp on your IV catheter and/or extension.
- Remove alcohol cap from the end of your IV catheter.
- Scrub the needleless connector on your IV catheter with an alcohol wipe for at least 15 seconds and allow to air dry.
- Remove the protective cap from the saline flush syringe. DO NOT touch the syringe tip after removing the cap. Push out air and a few drops of excess solution by holding syringe with the tip facing the ceiling and pushing the plunger up.
- Attach the saline flush syringe to the needleless connector on your IV catheter using a push and clockwise twisting motion until secured together.
- Flush your IV catheter using a “push/pause” method.
- Remove and discard the saline flush syringe in a trash container.
- IF resistance is met when trying to flush, verify clamp is open. IF resistance is still met, call your nurse.

**2. Administer Medication (A)**

- Scrub the needleless connector on your IV catheter with an alcohol wipe for at least 15 seconds and allow to air dry.
- Remove the protective cap from the IV tubing.
- Attach the IV tubing firmly to the needleless connector on your IV catheter using a push and clockwise twisting motion until secured together.
- Make sure your infusion dial is set to the correct rate, then open the clamp on IV tubing.
- Check your infusion consistently to make sure it is running correctly.
- Once the prescribed dose has infused, close the clamp on the IV tubing and disconnect from your IV catheter. Discard all equipment in a trash container.

**3. Flush your IV line with saline (S)**

- Follow step 1 above starting at the third bullet point.

Irving: 8200 Tristar Drive, Suite 120
Irving, Texas 75063

Fort Worth: 3515 NW Jim Wright Freeway
Fort Worth, Texas 76106

Pharmacy Phone: (866) 388-3883
Pharmacy Fax: (888) 249-3132

www.landmarkinfusion.com

4. Flush your line with heparin (H)

- Follow step 1 above starting at the third bullet point, using heparin rather than saline.
- Attach orange swab cap if indicated.
- Close the clamp on your IV catheter and/or IV extension set, if indicated.

***IF YOU HAVE TWO PORTS ON YOUR IV CATHETER...**

- *Make sure you flush each port at least once daily. Complete (SH) portion of (SASH) procedure on unused IV catheter port by flushing with saline and then heparin as indicated above.*

****IF YOU PLAN TO INFUSE TWO MEDICATIONS BACK-TO-BACK...**

- *Make sure you flush in between each medication with saline and end your infusion with heparin.*
 - *Use (SASASH) procedure as indicated above by flushing line with saline, administering medication #1, flushing line with saline, administering medication #2, flushing line with saline and then flushing line with heparin.*



Irving: 8200 Tristar Drive, Suite 120
Irving, Texas 75063

Fort Worth: 3515 NW Jim Wright Freeway
Fort Worth, Texas 76106

Pharmacy Phone: (866) 388-3883
Pharmacy Fax: (888) 249-3132

www.landmarkinfusion.com